



Performance Summary

Quarterly Reporting Schedule: January, April, July, October

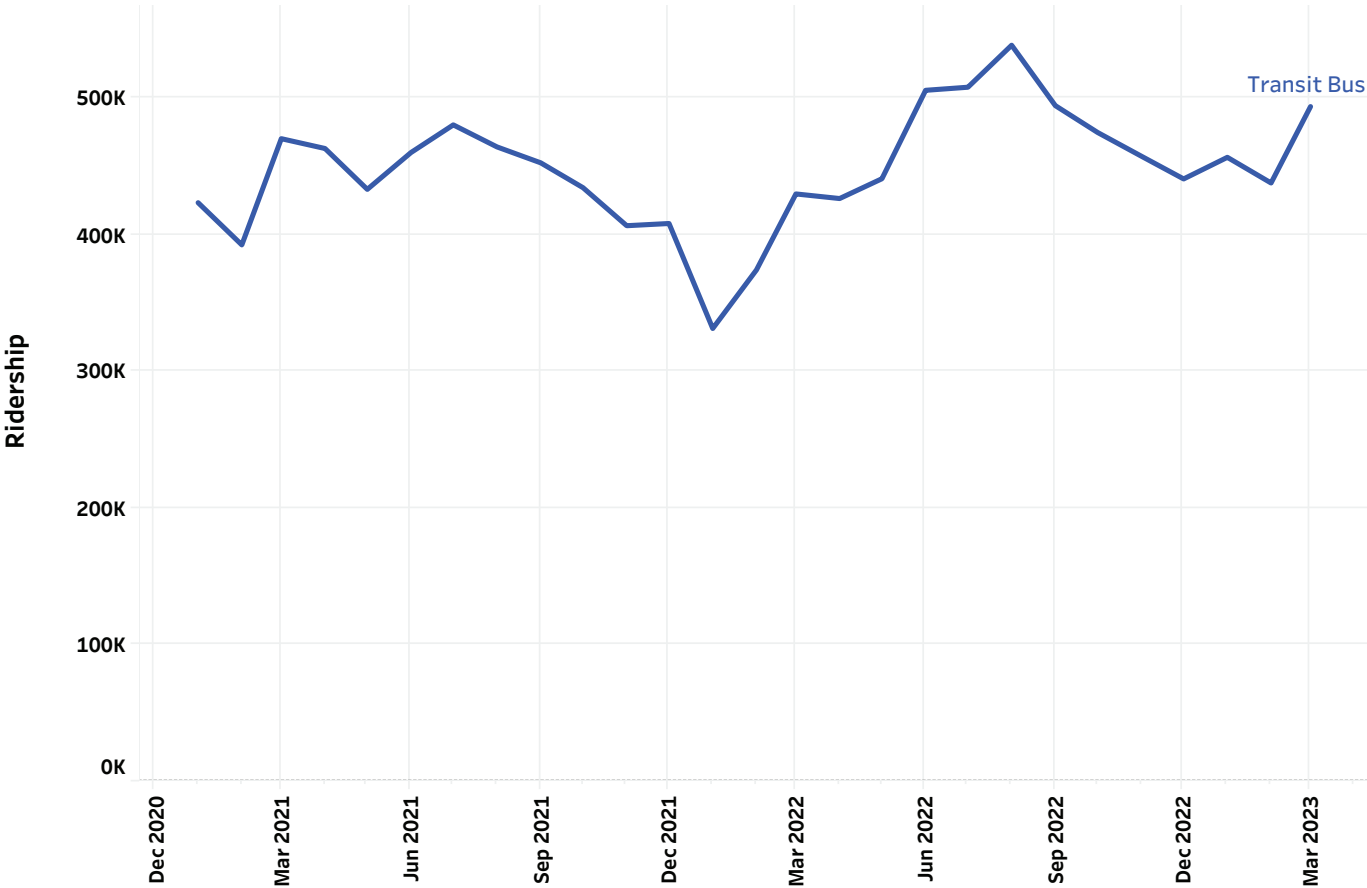
RIDERSHIP – ALL MODES

*Data reflects the impacts of the COVID-19 pandemic on Hampton Roads Transit.

		Total	Ferry	Light Rail	Paratransit	Transit Bus
2023	March	579,457	12,236	41,247	32,633	493,341
	February	531,943	9,275	56,891	28,284	437,493
	January	545,754	8,441	51,592	29,478	456,243
2022	December	518,093	8,741	40,725	28,178	440,449
	November	564,831	14,557	64,273	28,920	457,081
	October	583,349	15,122	64,537	29,287	474,403
	September	617,056	21,691	71,462	29,868	494,035
	August	669,326	28,502	72,292	30,352	538,180
	July	629,374	30,954	63,764	27,168	507,488
	June	642,146	37,592	70,467	28,850	505,237
	May	558,535	24,278	64,282	29,381	440,594
	April	540,611	18,607	67,101	28,787	426,116
	March	530,665	11,866	58,886	30,429	429,484
	February	456,624	7,568	49,977	25,159	373,920
	January	400,282	4,989	42,384	21,784	331,125
2021	December	497,141	9,479	54,016	25,774	407,872
	November	496,161	9,587	54,580	25,734	406,260
	October	539,642	16,273	62,887	26,436	434,046
	September	560,991	21,019	61,788	25,965	452,219
	August	568,045	22,023	56,728	25,442	463,852
	July	593,689	30,928	58,375	24,430	479,956
	June	558,424	22,480	51,570	24,616	459,758
	May	524,800	20,650	47,226	24,095	432,829
	April	549,003	15,519	46,888	23,905	462,691
	March	551,402	11,441	46,767	23,319	469,875
	February	456,245	4,840	39,991	19,164	392,250
	January	487,997	5,470	39,857	19,590	423,080

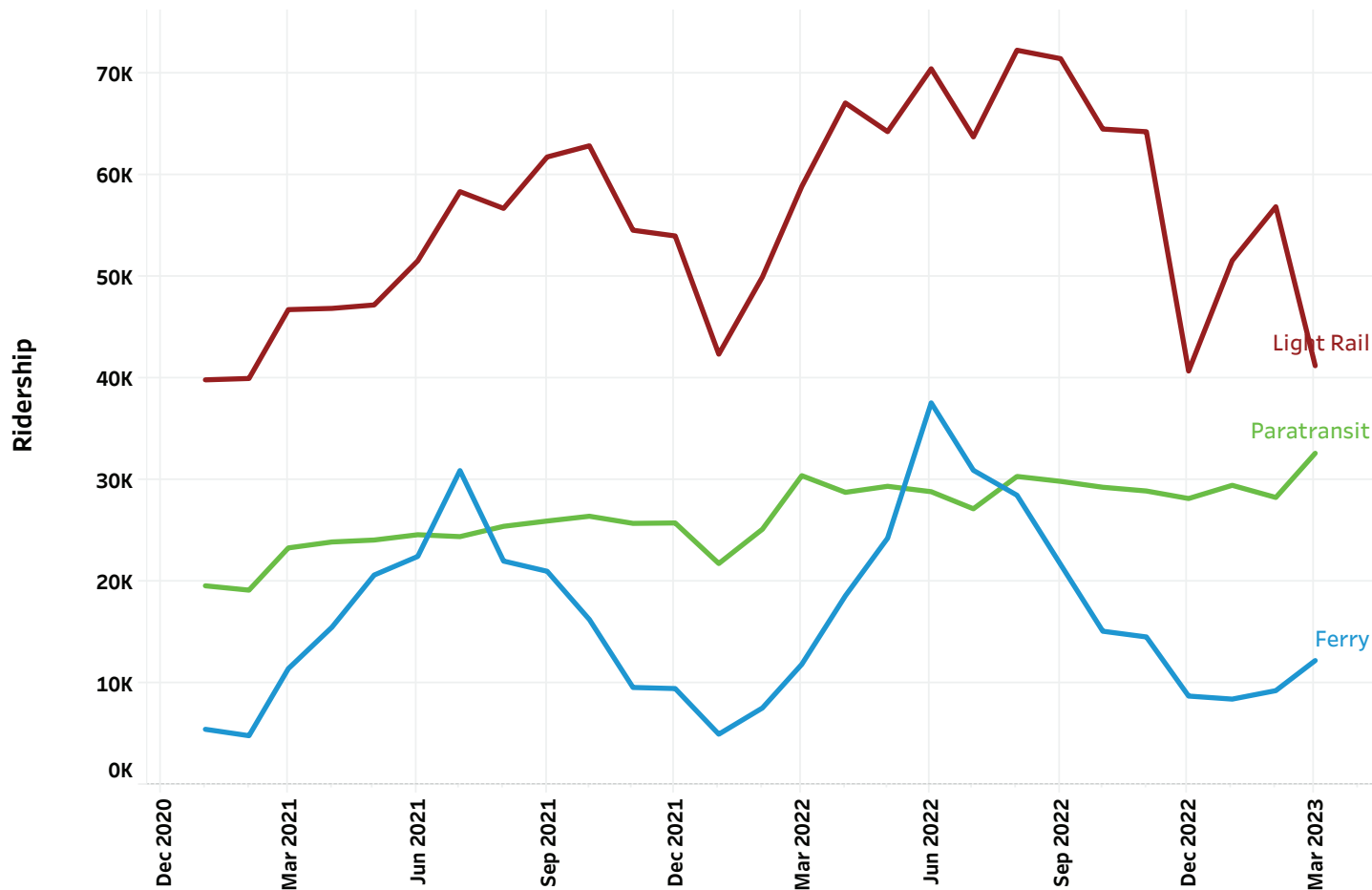
RIDERSHIP – BUS

*Data reflects the impacts of the COVID-19 pandemic on Hampton Roads Transit.



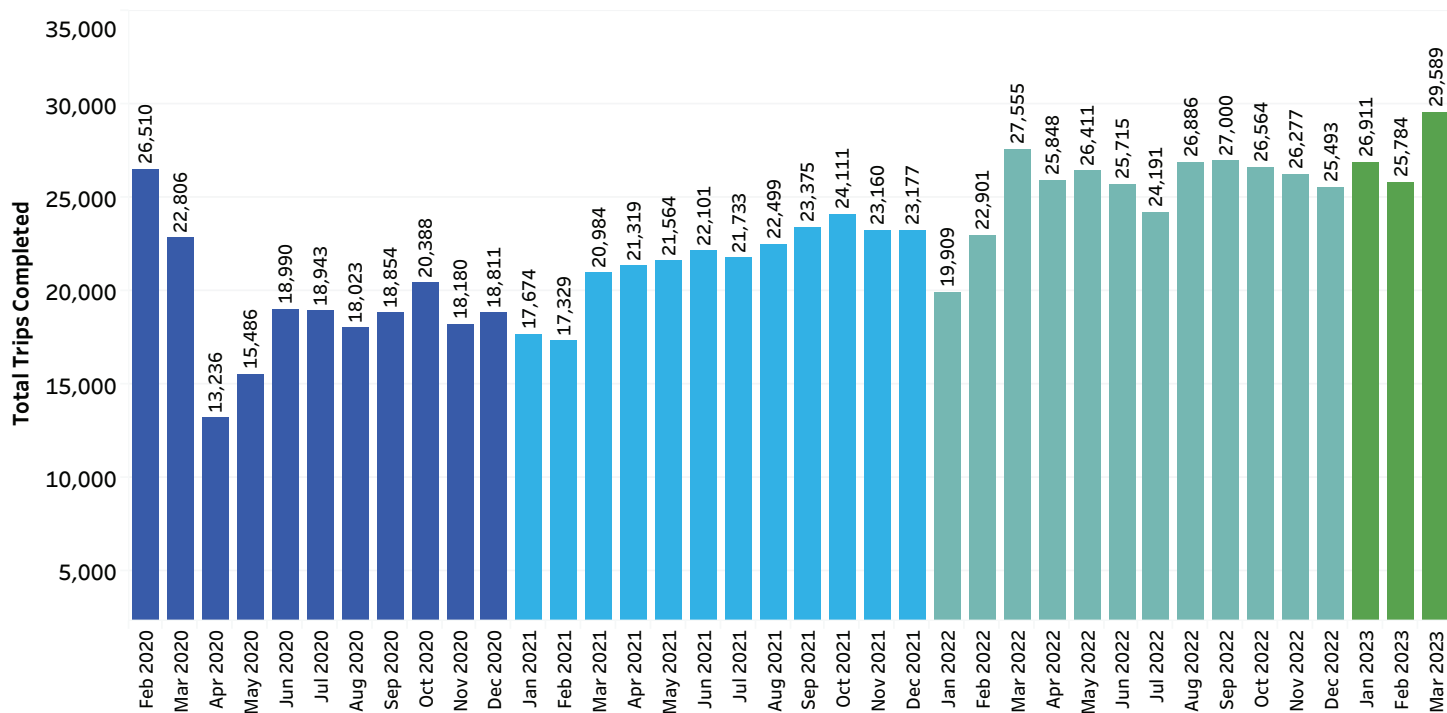
RIDERSHIP – LIGHT RAIL, FERRY, PARATRANSIT

*Data reflects the impacts of the COVID-19 pandemic on Hampton Roads Transit.



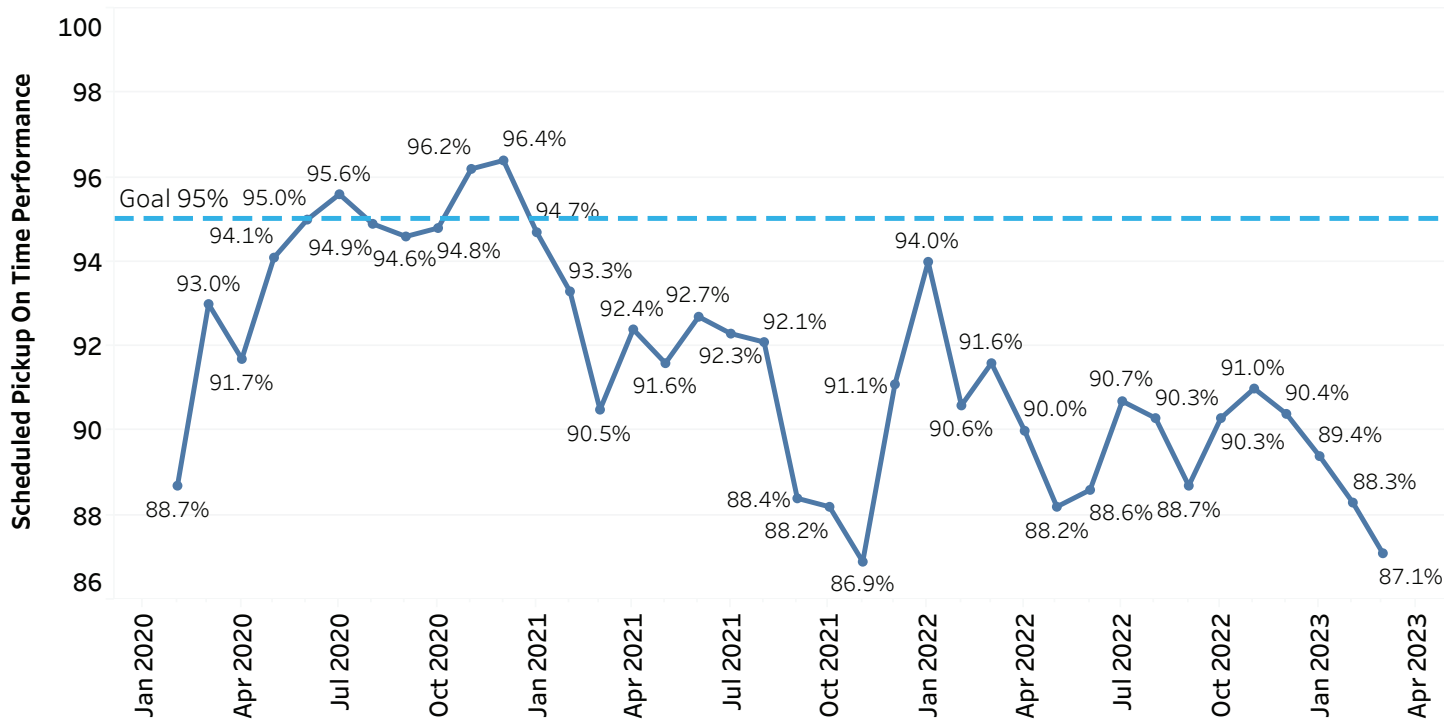
PARATRANSIT TOTAL TRIPS

*Data reflects the impacts of the COVID-19 pandemic on Hampton Roads Transit.



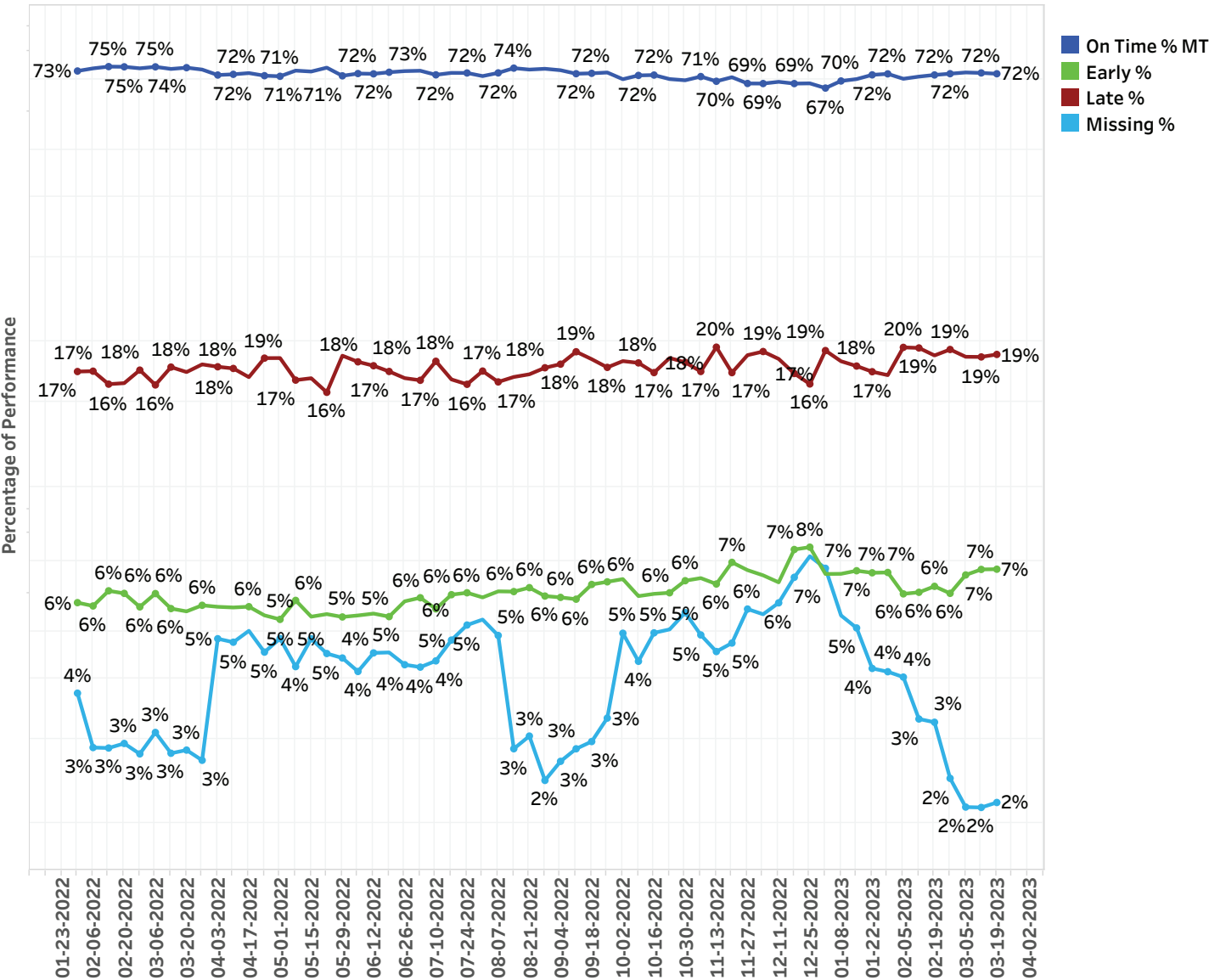
PARATRANSIT PICK-UP ON TIME PERFORMANCE

*Data reflects the impacts of the COVID-19 pandemic on Hampton Roads Transit.



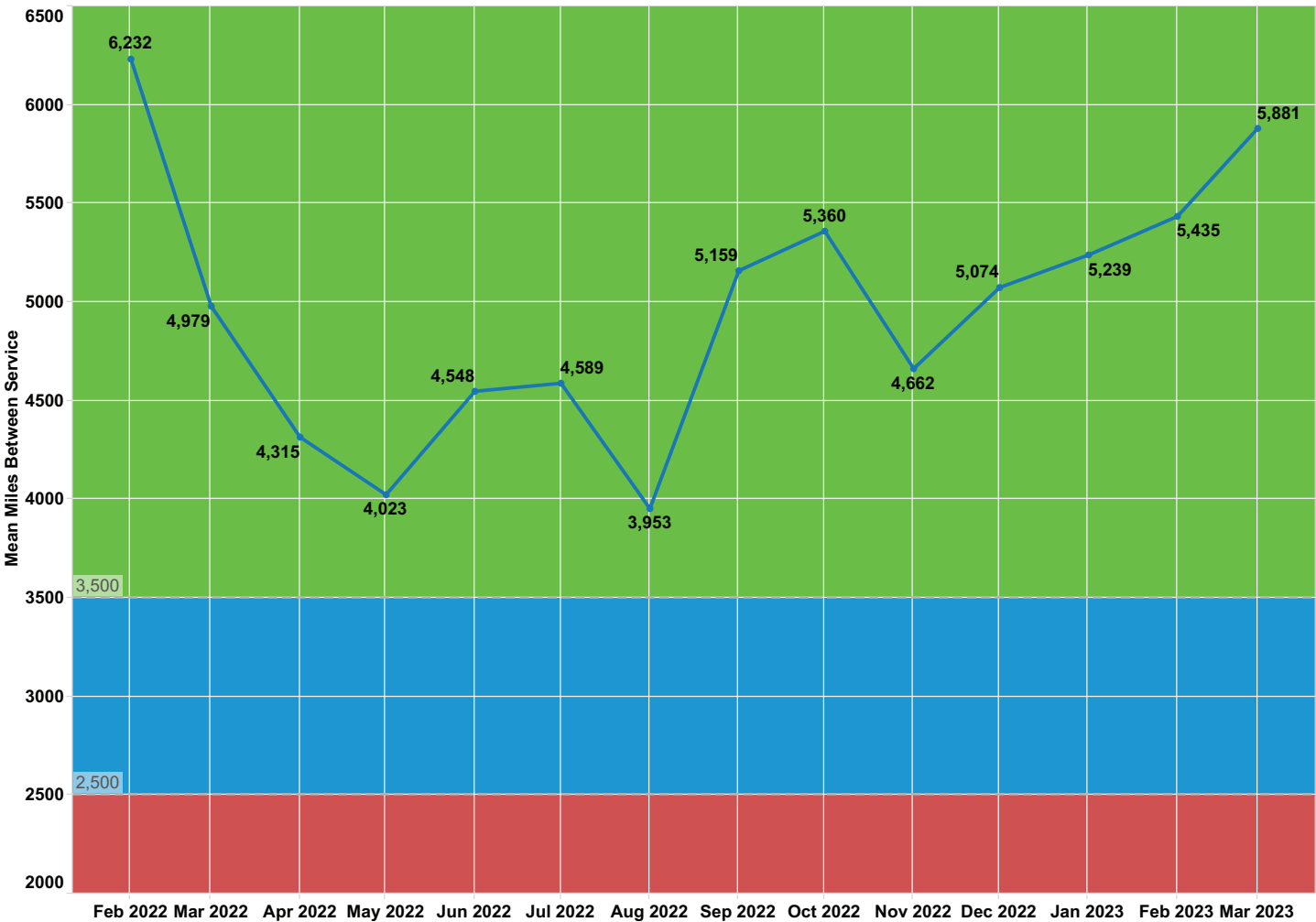
BUS ON-TIME PERFORMANCE

*Data reflects the impacts of the COVID-19 pandemic on Hampton Roads Transit.



MEAN DISTANCE BETWEEN SERVICE INTERRUPTIONS

*Data reflects the impacts of the COVID-19 pandemic on Hampton Roads Transit.



< 2,500 Miles Between Service Interruptions:

> 2,500 and < 3,500 Miles Between Service Interruptions:

> 3,500 Miles Between Service Interruptions:

Not Optimal

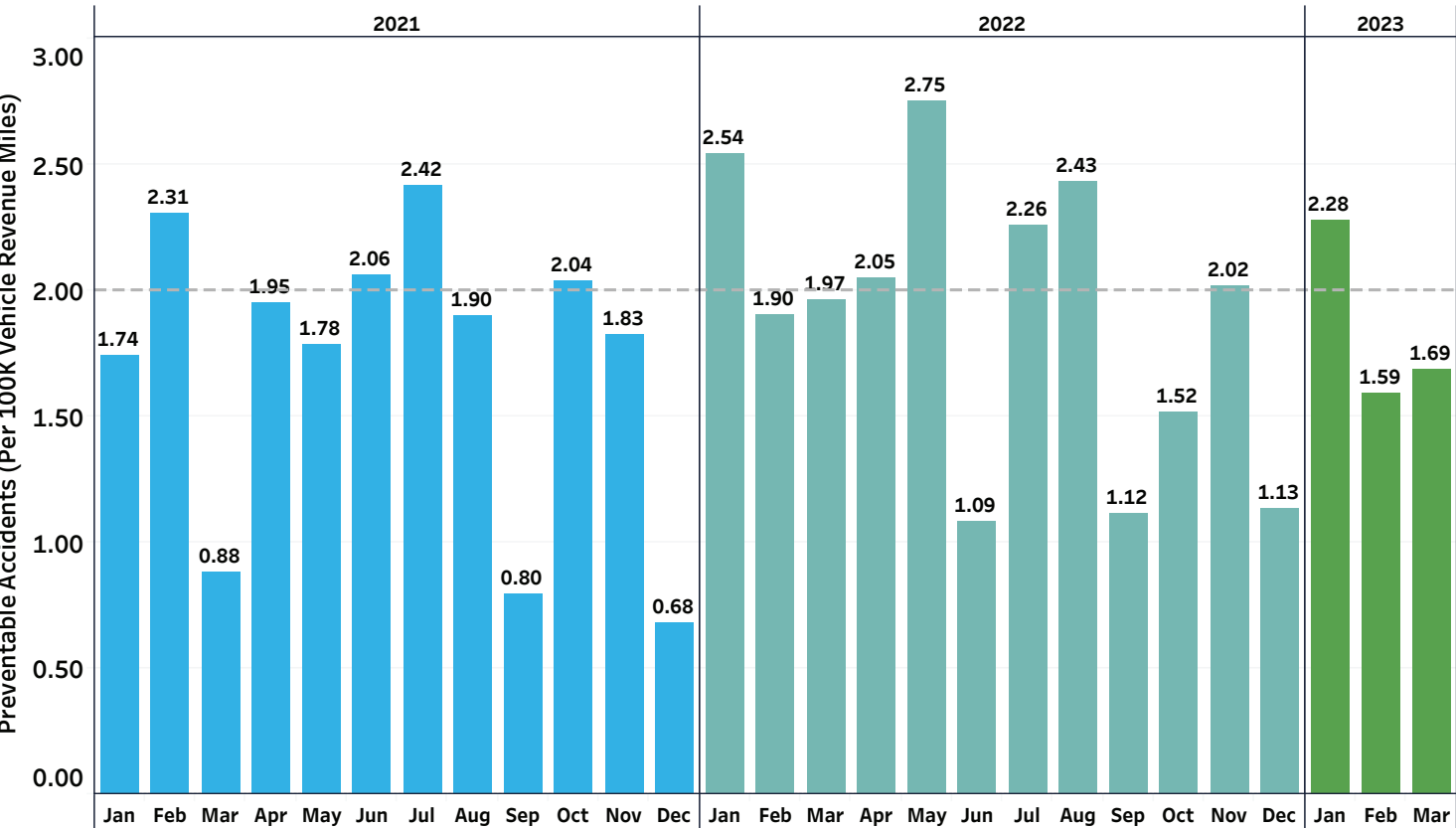
Less Than Optimal

Optimal



BUS PREVENTABLE ACCIDENTS – LAST 2 FULL YEARS

*Note: target line represents 2 preventable accidents per 100k vehicle revenue miles.



COMPLAINTS PER 100K BOARDINGS

