



Management/Financial Advisory Committee

Transportation Service Transportation Plan (TSP) Overview

April 26, 2017

gohrt.com

HRT Service Overview



HRT System Overview



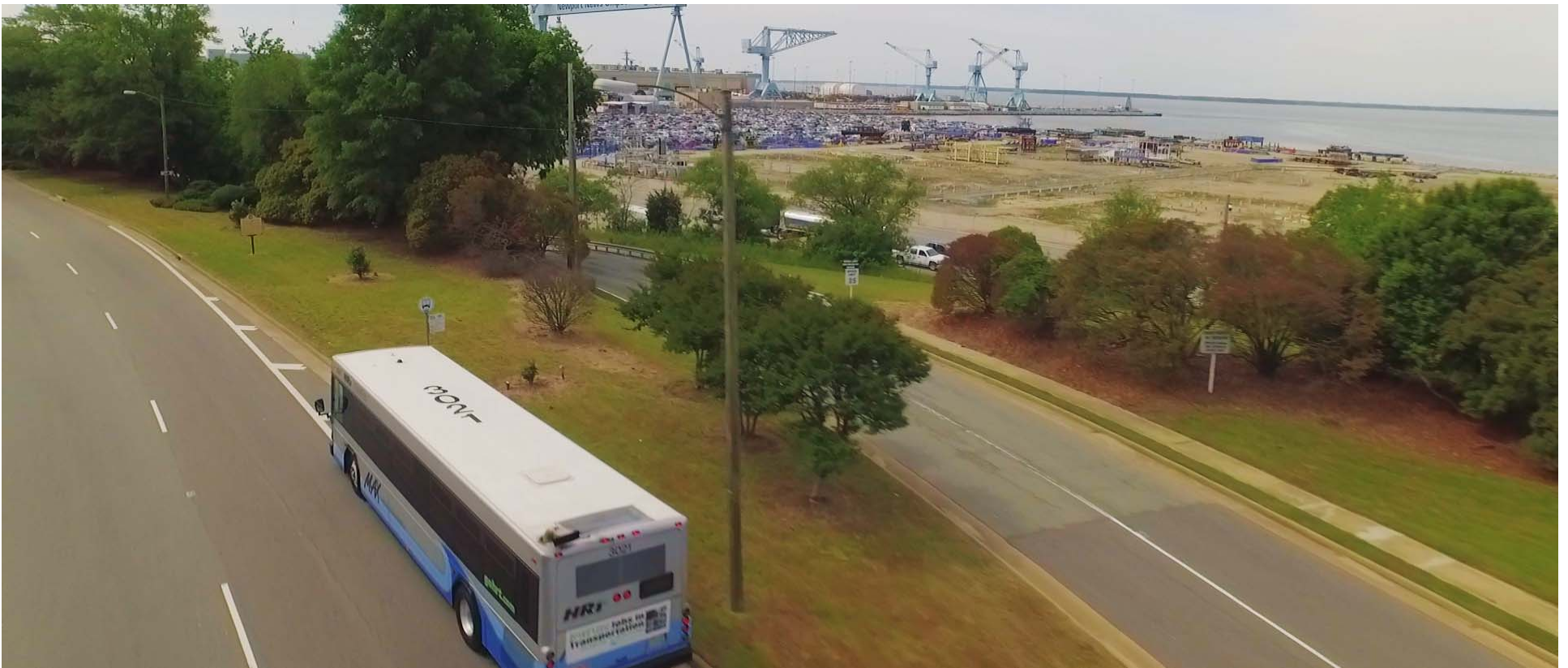
HRT operates 54 local bus routes. These routes provide service within and between the six cities that HRT serves.

HRT System Overview



HRT provides express service to/from key regional employment destinations with nine MAX commuter routes

HRT System Overview



Five Peninsula Commuter trips are operated Monday through Friday to provide transit service to Newport News Shipyard

HRT System Overview



Three seasonal routes provide service along the Oceanfront for tourist

HRT System Overview



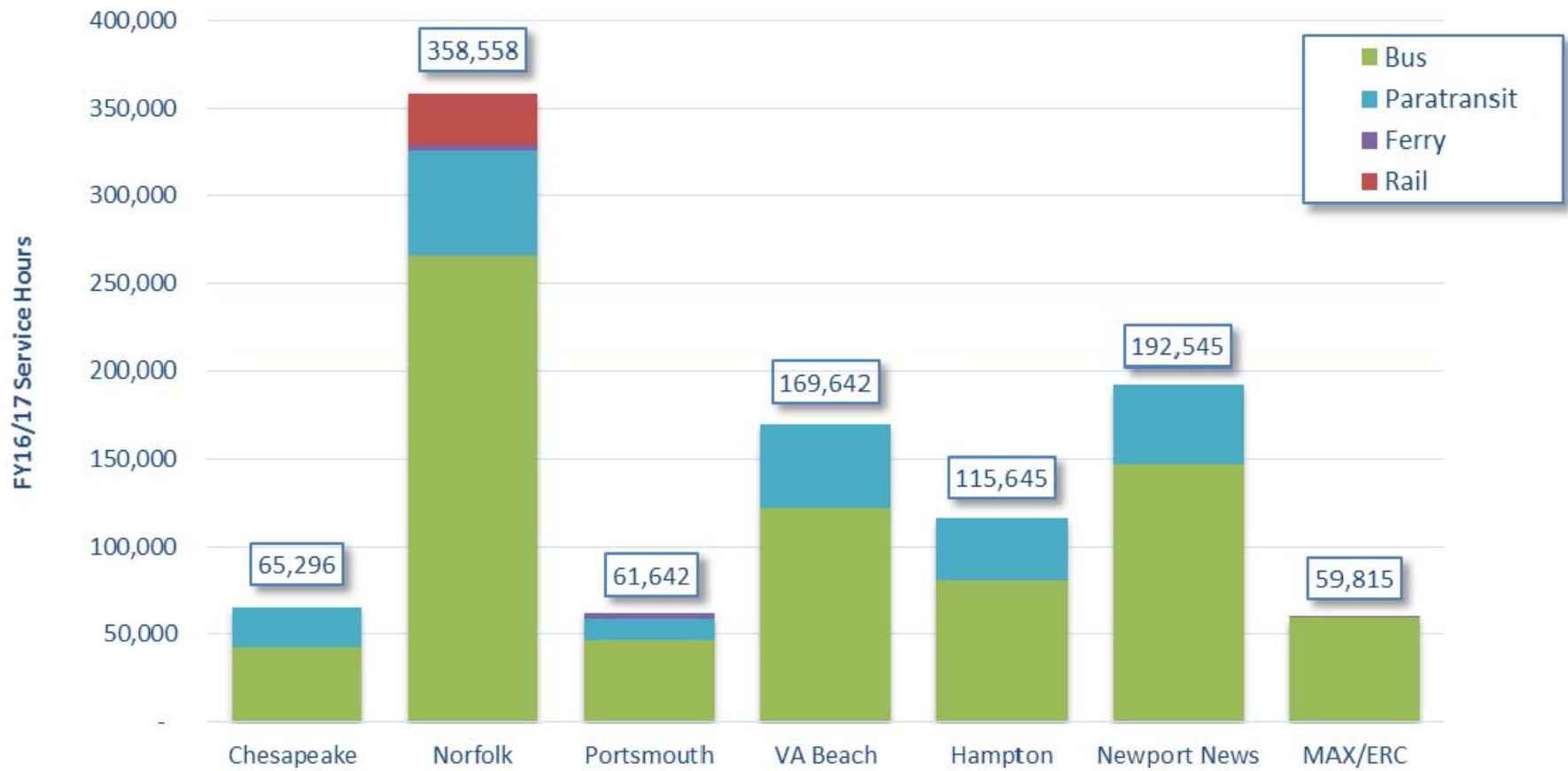
One Ferry route between Portsmouth and downtown Norfolk

HRT System Overview



One Light Rail route from EVMC to Newtown Road in Norfolk

Service Hours By City & Mode – FY16/FY17



Transportation Service Plan (TSP)



TSP Process

- The Cost Allocation Agreement was adopted in 1999 with the merger of Pentran and Tidewater Regional Transit. The purpose of the agreement is to meet the local government funding needs of the participating cities on an equitable basis within the limits of available resources.
- The TSP contains a description of the service such as route name, hours of service to be provided, estimated cost, estimated farebox revenue and estimated local share of the cost of service.
- Additions, deletions, or revisions to the TSP may be proposed at any time by a City by letter from the City Manager, however once the budget is adopted any changes made in mid-year are not eligible for allocation of Federal or State operating assistance

TSP Schedule

April - September

- HRT Planning staff develops a transit service plan for the next fiscal year including base level service, vehicle hours, vehicle miles, and peak vehicle requirements

October

- HRT submits proposed TSP's to local funding partners by Oct. 1st.

November

- Planning meets with six cities to discuss proposed service plan

November thru January

- Localities discuss with HRT any route change request scenarios; Planning forwards requests to HRT Finance Department for use in draft budget

January

- HRT Finance and Planning Departments meet with each locality to discuss the proposed HRT Budget

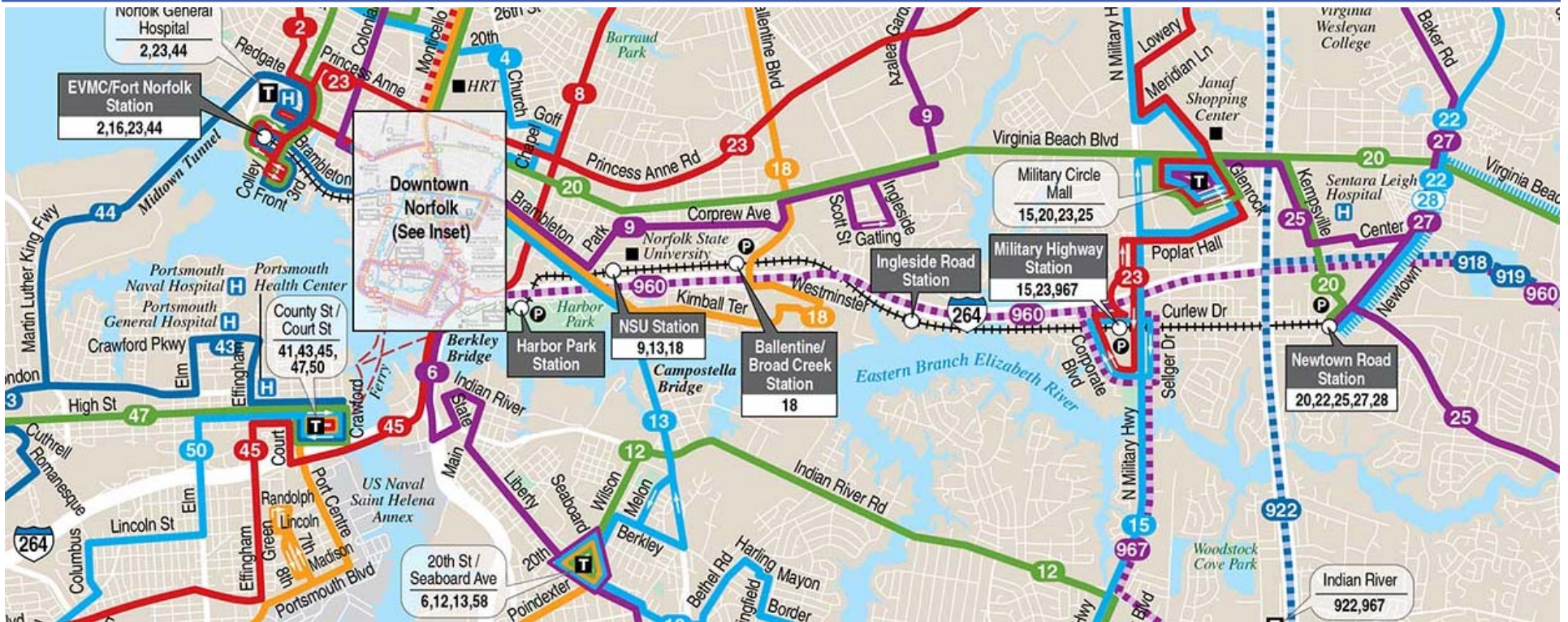
February

- HRT receives final route changes from six cities and forwards to HRT Finance for inclusion in draft HRT Budget

Bus Route Planning & Service Evaluation



Bus Route Design



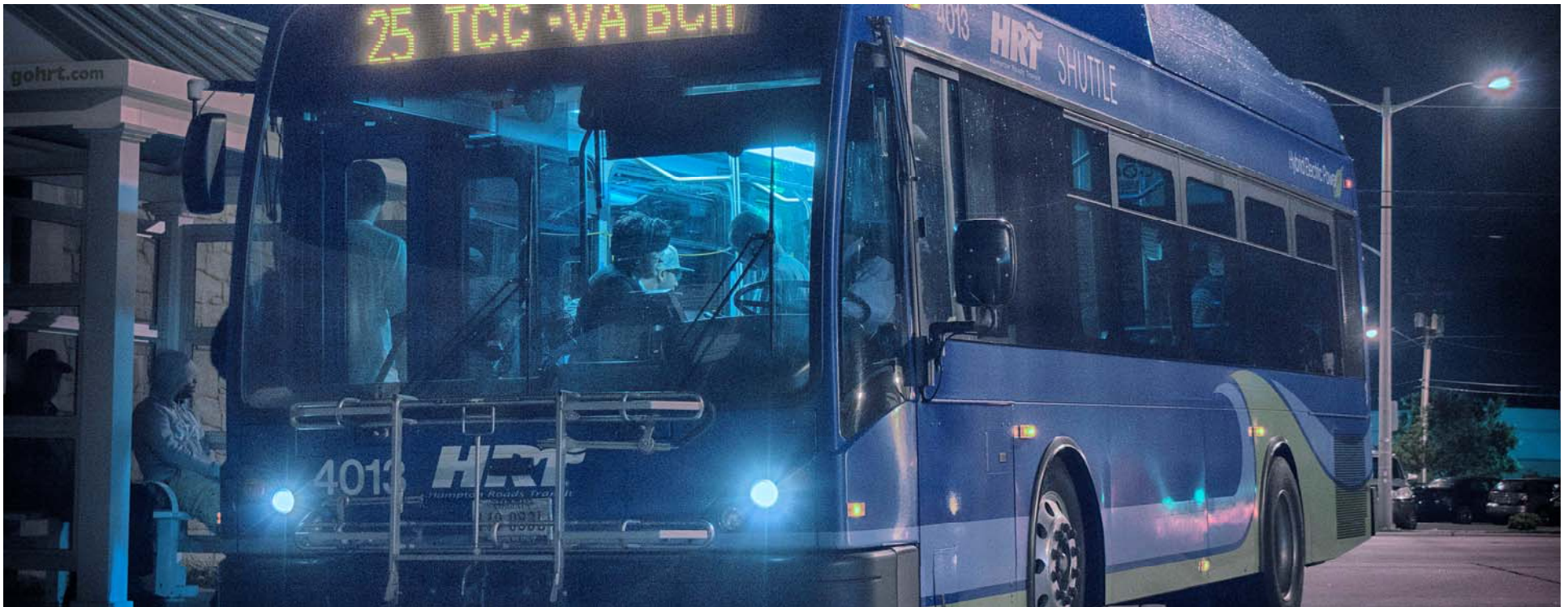
The alignment of each bus route is a key factor in its ability to successfully serve customers mobility needs

Service Area Coverage



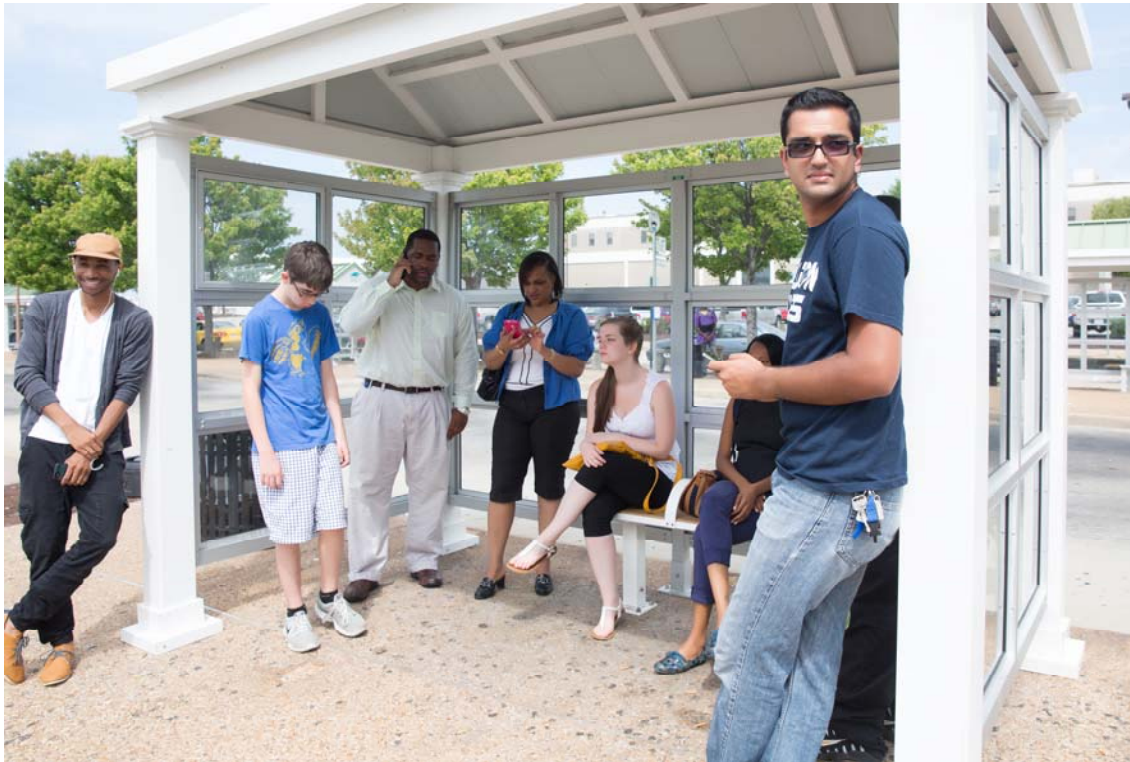
The service area coverage standard defines how transit service is provided in the different mobility markets of the service area

Span of Service



The span of service defines the start and finish of service each day for specific routes. A longer span of service allows a route to capture more riders throughout the day for a wider variety of trip purposes, but also increases overall costs.

Service Evaluation



An essential function of HRT's responsibility is to evaluate the performance of the routes that make up our service network.

Service Evaluation Process

Request is made

Data
Analysis

Develop &
Evaluate
Proposed
Service
Request or
Changes

Internal Input
from other
HRT
departments

Public Input
& Review of
Major
Changes

Title VI &
Environmental
Justice
Analysis

City and
Commission
Budget
Approval



Service Performance Standards



FY 2018 Service Plan Update



FY 18 Service Planning Update

The following are the proposed changes to the base level plan for FY 2018

- City of Chesapeake – No Changes
- City of Hampton – Reduce level of service on Route 102
- City of Newport News
 - Eliminate weekend service on Route 119
 - Reduce frequency from 30 minutes to 60 minutes on Route 112 after 8:00 pm on weekdays and Saturdays
- City of Norfolk – No Changes
- City of Portsmouth – No Changes
- City of Virginia Beach
 - Eliminate Seasonal Wave Route 32
 - New Seasonal Route #35 – Bayfront Shuttle
 - Route 33 – add an additional vehicle to improve schedule adherence